



Colwich Parish Council

Public Consultation : HS2

Monday 18th February 2019

Agenda



- Background (HS2)
- Petitioning
- Additional Proposal 2 (AP2)
- Construction Traffic (AP2)
- Indicative Construction Programme (AP2)
- HS2 related Funds/Grants
- Questions

Background (HS2)



- Phase 1: London to the West Midlands
 - Royal Assent granted on 23 Feb 2017.
 - Preparatory works have commenced.
 - <https://www.gov.uk/government/collections/high-speed-rail-london-west-midlands-bill>
- Phase 2a: West Midlands to Crewe
 - Royal Assent anticipated Nov 2019.
 - <https://www.gov.uk/government/collections/high-speed-rail-west-midlands-to-crewe-bill>
- Phase 2b: Crewe to Manchester and West Midlands to Leeds.
 - <https://www.gov.uk/government/collections/hs2-phase-2b-crewe-to-manchester-and-the-west-midlands-to-leeds>

Background-Phase 2a Timelines (1)



- **17 Jul 17:** Government introduced the High Speed Rail (Ph2a) Bill to Parliament.
- **30 Jan 18:** Bill secured its Second Reading
- Second Reading triggered a petitioning period
 - Select Committee appointed to hear the petitions
 - Select Committee began its hearings on 19 Mar 18.
 - <https://www.parliament.uk/business/committees/committees-a-z/commons-select/high-speed-rail-west-midlands-crewe-bill-select-committee-commons/>

Background-Phase 2a Timelines (2)



- **23 Mar 18:** Government deposited an Additional Provision & Supplementary Environmental Statement
- **24 May 18:** Select Committee published first report
- **25 Jun 18:** Government published its response to first report
- **23 Jul 18:** Select Committee published second report
- **13 Nov 18:** Government published its response to second report
- **8 Feb 19:** Government deposited Additional Provision 2 (AP2) & Supplementary Environmental Statement.
- **15 Mar 19:** AP2 Petitioning Period closes
- **Apr 19 (?):** Select Committee – Petitioning
- **Nov 19 (?):** Royal Assent

Petitioning AP2 (1)



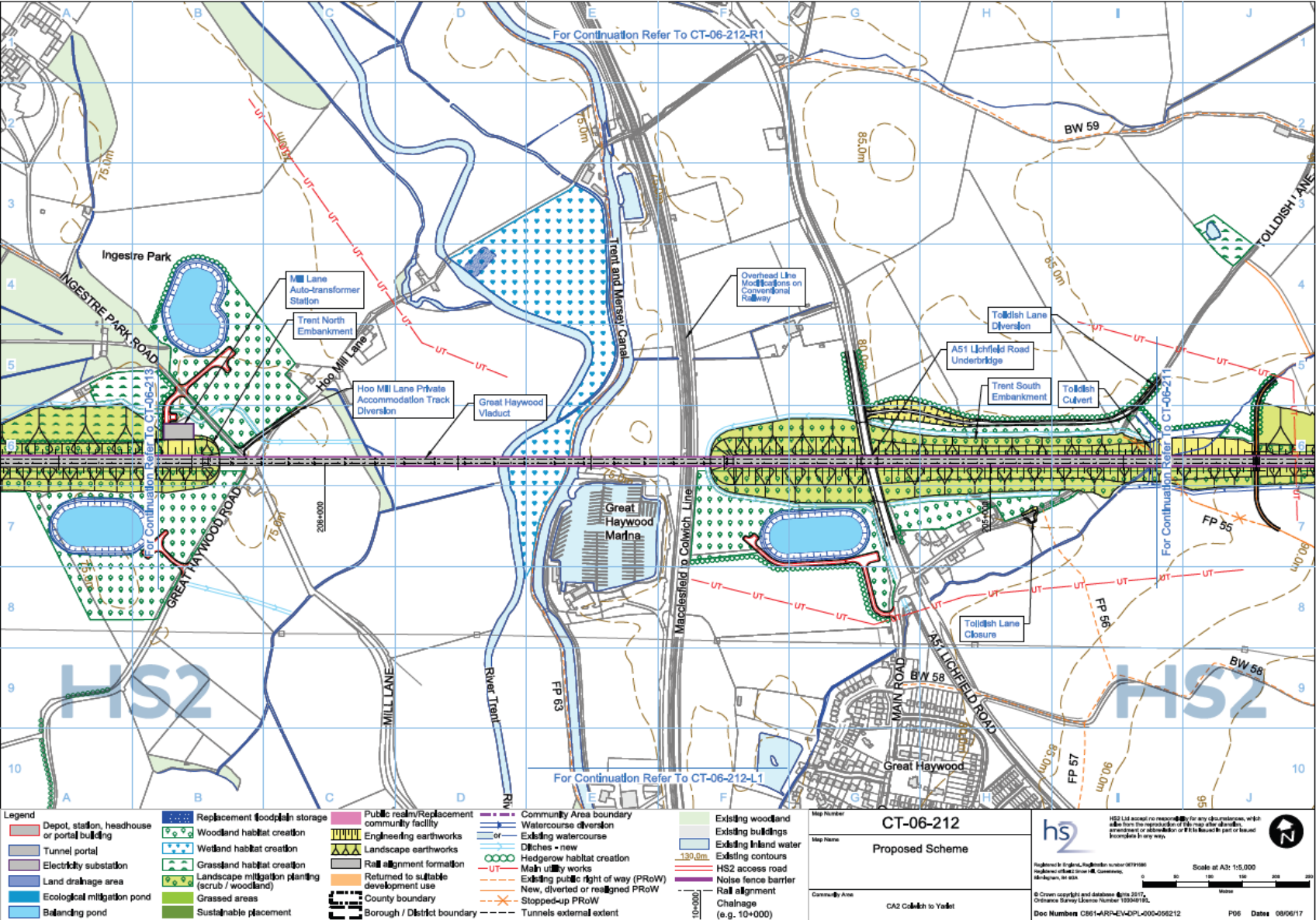
- What is a petition?
 - Summary of objections to particular aspects of AP2
- Who can petition?
 - Any individual or body directly and specially affected by the Additional Provision can submit a petition,
- Two Stage Process
 - Draft/submit petition to Parliament
 - Appear on the petition at select Committee Stage (if necessary)
- Petitions to be submitted by 3pm, Friday 15 Mar 19
- Petition hearings (AP2) due to commence Apr 19.

Summary of AP2 Amendments



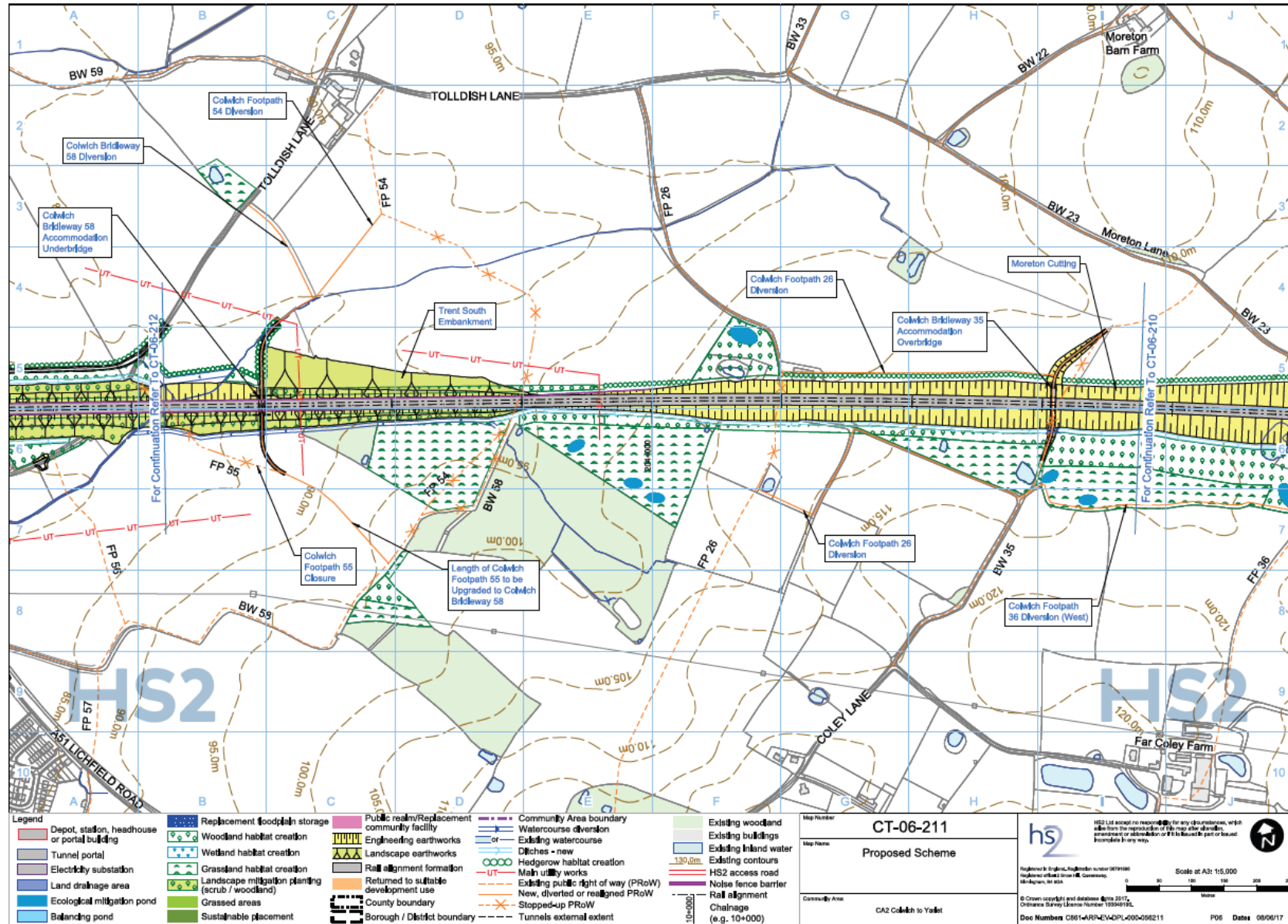
- Additional Land Required:
 - Removal of Moreton retaining wall / realign access track
 - Diversion of National Grid gas pipeline and new utility compound
 - Maintenance Access and diversion of Bridleway 58
 - Diversion of BPA fuel pipeline
 - Three areas - separation of activities around Great Haywood
 - Permanent diversion of: 11kV o/h line; 11kV o/h to u/g line
 - New Railway systems compound
 - Local placement of surplus excavated material
 - Noise fence barrier
- Temporary Flood Risk – temporary construction compound

Gt Haywood - AP2





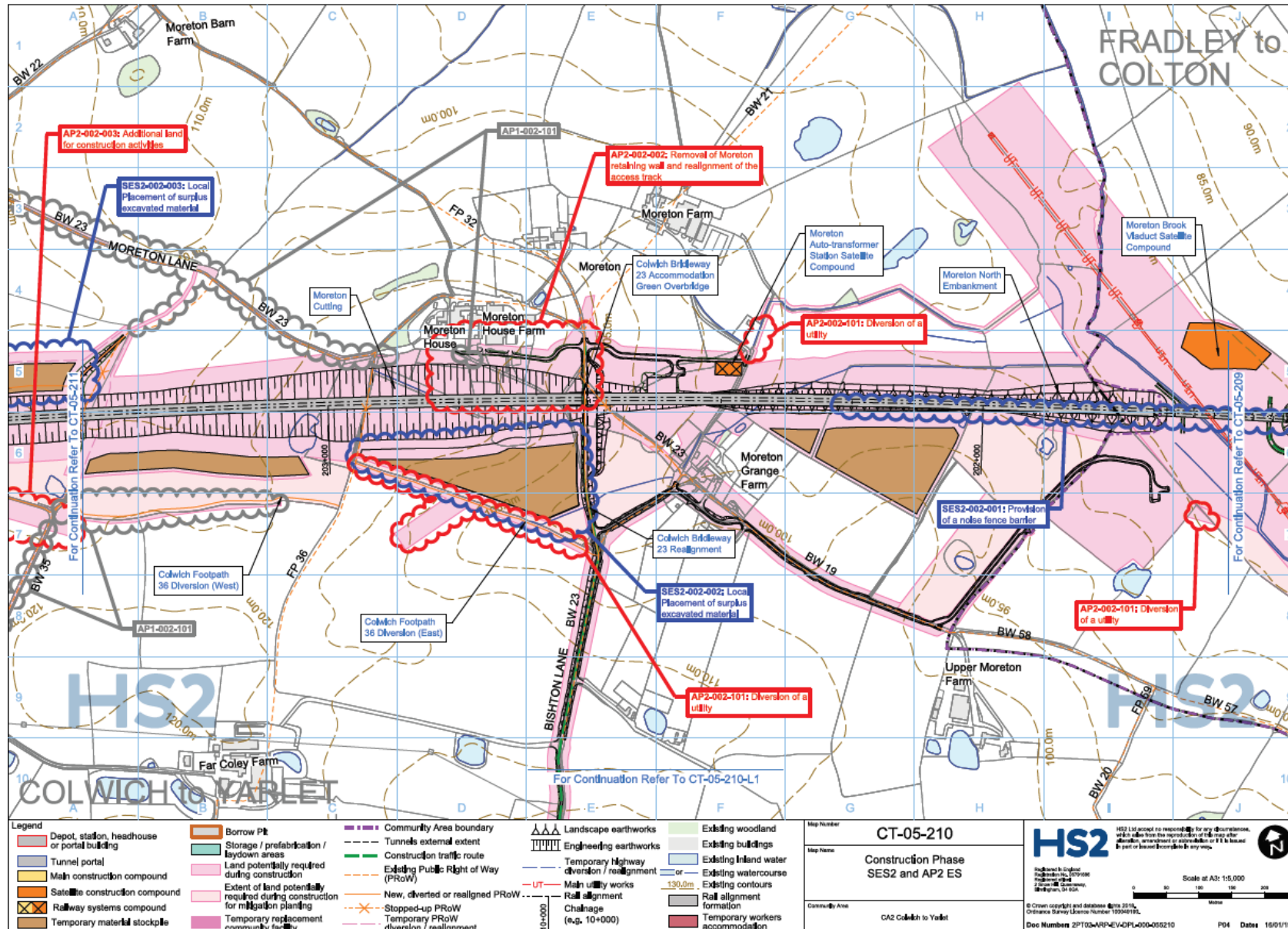
Toldish Lane / Moreton Lane – AP2





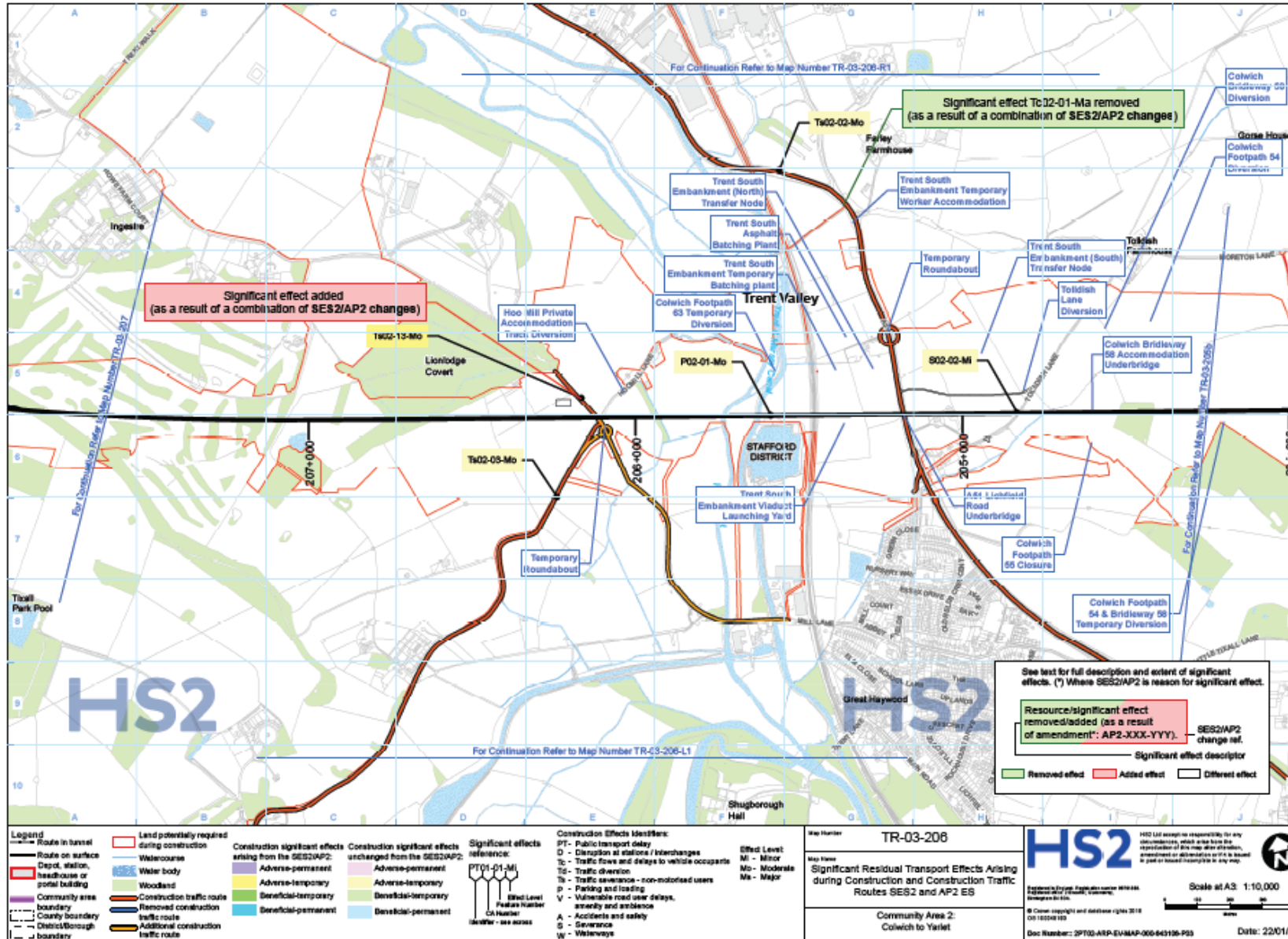


Moreton Farm / Bishton Lane – AP2





Construction Traffic – AP2







Indicative Construction Programme



Colwich to Yarnet	2020 Quarters				2021 Quarters				2022 Quarters				2023 Quarters				2024 Quarters				2025 Quarters				2026 Quarters				2027 Quarters			
Construction activity	1	2	3	4	1	2	3	4	1	2	3	4	1	2	3	4	1	2	3	4	1	2	3	4	1	2	3	4	1	2	3	4
Advanced works																																
Trent South embankment main compound																																
Site preparation and set-up																																
Worker Accommodation																																
Utilities																																
Demolitions																																
Hoo Mill Lane diversion																																
Colwich Bridleway 23 accommodation overbridge																																
Colwich Bridleway 35 accommodation overbridge																																
Colwich Bridleway 58 accommodation underbridge																																
Tollidish culvert																																
Tollidish Lane temporary highway diversion																																
A51 Lichfield Road underbridge																																
Moreton North embankment																																
Moreton cutting																																
Great Haywood viaduct																																
Trent South embankment																																
Bishton Lane widening																																
Moreton auto-transformer station foundation																																
Tollidish Lane diversion																																
Track installation (access point 4)																																
Site reinstatement																																
Trent South utility compound																																
National Grid diversion																																
Main Road utility compound																																
British Pipeline Agency diversion																																
Moreton auto-transformer station satellite compound																																
Site preparation and set-up																																
Moreton auto-transformer station installation																																
Site reinstatement																																
Trent North embankment satellite compound																																
Site preparation and set-up																																
Utilities																																
Lionlodge culvert																																
Ingestre underbridge																																
Trent North embankment																																
Mill Lane auto-transformer station foundation																																
Mill Lane auto-transformer station installation																																
Site reinstatement																																
Trent North utility compound																																
National Grid diversion																																

HS2 Related Funds



- Community & Environment Fund (CEF)
 - Setup for communities that are demonstrably disrupted by the construction of the proposed scheme.
 - Two types:
 - CEF Local – quality of life and environment in community
 - CEF Strategic – large projects over several communities
 - examples: new community facilities, improved pedestrian/cycle access, landscape/nature conservation enhancement, etc.
- Road Safety Fund
 - Improve traffic, pedestrian, cycle and equestrian safety
 - Road safety improvements, traffic calming measures
- Both funds become available following Royal Assent of the Phase 2a Bill.

Questions

?



Contact Details



Parish Council Website:

http://www.colwichparishcouncil.gov.uk/Contact_Us_5723.aspx

Councillors:

http://www.colwichparishcouncil.gov.uk/Your_Councillors_5711.aspx

Cllr Andy Dunn: andy.dunn@colwichparishcouncil.gov.uk